



## Q-Code 75

## Bluetooth Series

- Intuitive, versatile and ergonomic design makes it ideal for retail environments.
- Tough ABS/PC Composite Housing. 1.5m drop test resistance.

- FCC and CE EMC Class B Certification.

- Scan rate of 300 times per second at a precision of 3mil (1D) or 5mil (2D).

- On board 1MB (1D) or 4MB (2D) Flash memory. Data automatically saved to this memory in the event of battery depletion.

- Precise trigger to compliment high responsiveness

- Rapid charge delivery with micro-USB 3.0. interface. RS232 and VCOM also supported.

- Industry leading AWG -24 rating cable. High swing test rating. Separate warranty.

- Built - in ESD protection IC on PCB.
- Reliable voltage tolerance of 5-14V ensures a long life span.

- Bluetooth Class 2 V2.1 with EDR for superb performance with mobility. Includes 3.7V 2200mAh Li-ion battery.



### Application:

- Point of Sale
- Price Comparison
- Ordering via Scanner
- Logistics
- Inventory Checking
- Healthcare: Admission/Discharge, Pharmacy, Patient ID.
- Ticket and Access Management

### ACCESSORIES



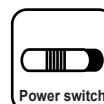
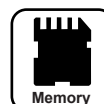
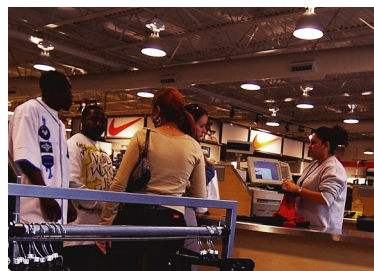
Removable Cover



USB / RS232 Cable



Strap





## Q Code75 Series / Bluetooth

### SPECIFICATIONS

	QC7506	QC7516	QC7556
Category	CCD Linear Imager	Laser	2D Imager
Housing	ABS with PC		
Performance			
Interface	Bluetooth® Class 2(2.4GHz) Version 2.1 +EDR		
Connected Power Consumptions	Typical 3mA, Max 8mA		
Data Transfer Power Consumptions	Typical 15mA, Max 20mA		
Scan rate	SPP / HID		
Batch Scanning	300 Scans per sec		—
Memory	1MB / 4MB (upon request)		
1D Symbolologies	EAN-13,EAN-8,UPC-A,UPC-E, ISSN, ISBN, Codabar, Code 128,Code 93, ITF-6, ITF-14, Interleaved 2 of 5, Industrial 2 of 5, Standard 2 of 5, Matrix 2 of 5, GS1 Databar, Code 39, Code 11, MSI-Plessey, Plessey		
2D Symbolologies	None		PDF 417, Data Matrix(ECC200,ECC000,050,080,100,140), QR Code
Hands-free Scanning	Trigger/ Auto-Sense / Continuous Modes		
Reading Precision	≥ 3mil		≥ 5mil
Light Source	610nm-640nm	648nm-660nm	Red Led 625±10nm
Depth of Field	UPCA(13mil):50-620mm		EAN13(13mil):50-195mm
	EAN13(13mil):50-610mm		Code 39(5mil):50~105mm
			PDF417 (6.67mil):35~135mm
			Data Matrix (10mil):35~140mm
			QR Code(15mil):30~165mm
Symbol Contrast	≥ 30% Reflectance Difference		
Scan Angle	Pitch	±60° @ 0°Roll and 0°Skew	Pitch ±55°
	Roll	±30° @ 0°Pitch and 0°Skew	Roll ±360°
	Skew	±60° @ 0°Roll and 0°Pitch	Skew ±55°
Field of View	—		Horizontal 36° ; Vertical 23°
Mechanical/Electrical			
Maximum Power Consumption	0.28W	0.33W	0.76W
Battery Capacity	Maxell 3.7V 2200 mAh Li-ion Battery		
Working Hour	15hr (@ 5s / scan)		8hr (@ 5s / scan)
Input Voltage	DC 5V ± 0.5V		
Operating Current/	85mA	100mA	230mA
Standby Current	25mA		7mA
Dimension	L 100 mm x W 46 mm x H 23mm		
Weight	150g±10(W/o Cable)		
Environmental			
Operating Temperature	-20°C ~ +60°C		
Storage Temperature	-40°C ~ +85°C		
Humidity	5% -95% (non-condensing)		
Ambient Light	0 ~100,000 LUX		
Certifications	FCC Class B · CE EMC Class B · RoHs		
Accessories			
Cables	Micro USB 2.0 Charge 1.8M Cable		
Power Adapter	Output: DC5V, 800mA; Input: AC100~240V, 50~60Hz		

#### Advancode Technology Co., Ltd.

6F-5, No.81, Sec. 1, Xintai 5th Rd., Xishi Dist., New Taipei City, 221, Taiwan

TEL : 886-2-7708-1569 FAX : 886-2-8698-4093

Mail : info\_adv@advancode.us

© 2015 Copyright Advancode Technology CO.,LTD All Rights Reserved